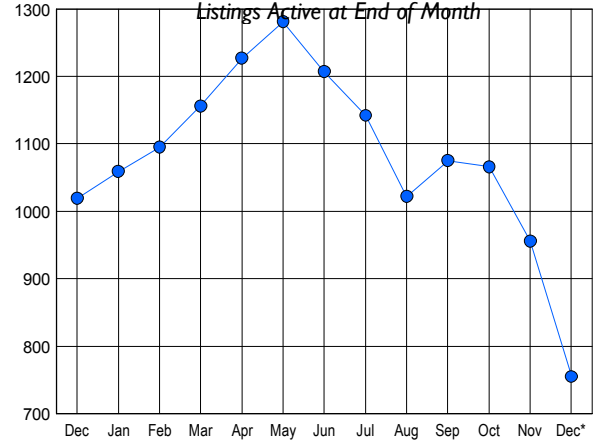


### LISTINGS

Price Range	New This Month			Total Actives		
	2011	2010	% Change	2011	2010	% Change
0 - 149,999	24	24	0.0	82	149	-45.0
150,000 - 199,999	14	14	0.0	67	117	-42.7
200,000 - 299,999	36	49	-26.5	173	239	-27.6
300,000 - 399,999	46	43	7.0	131	167	-21.6
400,000 - 499,999	30	29	3.4	102	108	-5.6
500,000 - 599,999	19	13	46.2	74	75	-1.3
600,000 - 699,999	6	10	-40.0	29	45	-35.6
700,000 - 799,999	1	1	0.0	18	22	-18.2
800,000 - 899,999	3	5	-40.0	16	19	-15.8
900,000 - 999,999	1	1	0.0	10	12	-16.7
1,000,000 - 1,249,999	0	1	-100.0	10	14	-28.6
1,250,000 - 1,499,999	1	7	-85.7	16	17	-5.9
1,500,000 +	3	3	0.0	27	35	-22.9
<b>TOTALS</b>	<b>184</b>	<b>200</b>	<b>-8.0</b>	<b>755</b>	<b>1019</b>	<b>-25.9</b>

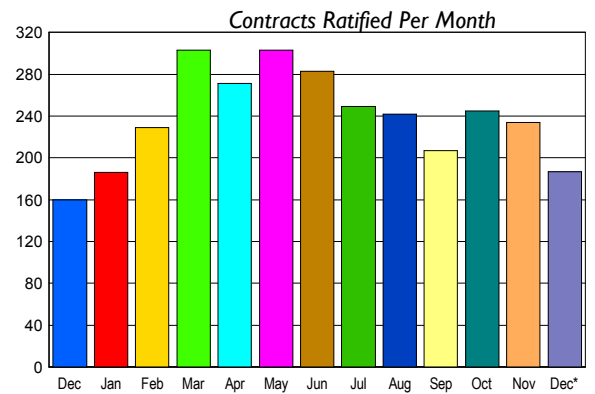
### INVENTORY TREND



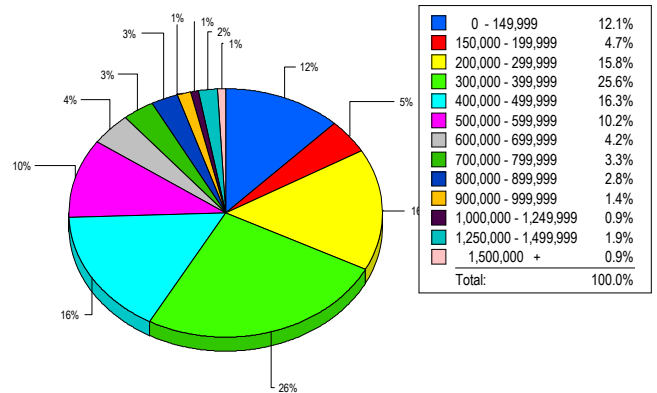
### CONTRACTS

Price Range	New This Month			Year-To-Date		
	2011	2010	% Change	2011	2010	% Change
0 - 149,999	22	21	4.8	280	198	41.4
150,000 - 199,999	17	9	88.9	175	195	-10.3
200,000 - 299,999	38	34	11.8	537	511	5.1
300,000 - 399,999	40	39	2.6	654	749	-12.7
400,000 - 499,999	38	21	81.0	467	484	-3.5
500,000 - 599,999	12	14	-14.3	287	301	-4.7
600,000 - 699,999	7	9	-22.2	131	138	-5.1
700,000 - 799,999	4	3	33.3	85	82	3.7
800,000 - 899,999	2	5	-60.0	44	41	7.3
900,000 - 999,999	0	2	-100.0	30	35	-14.3
1,000,000 - 1,249,999	1	0	100.0	27	26	3.8
1,250,000 - 1,499,999	3	2	50.0	24	28	-14.3
1,500,000 +	3	1	200.0	36	36	0.0
<b>TOTALS</b>	<b>187</b>	<b>160</b>	<b>16.9</b>	<b>2777</b>	<b>2824</b>	<b>-1.7</b>

### SALES TREND



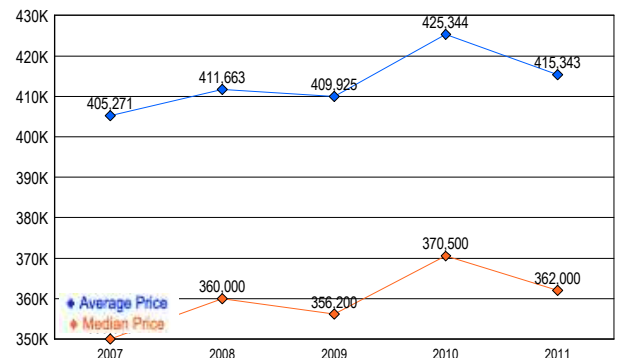
### MARKET BY PRICE RANGE



### SETTLEMENTS

Price Range	New This Month			Year-To-Date		
	2011	2010	% Change	2011	2010	% Change
0 - 149,999	26	10	160.0	250	175	42.9
150,000 - 199,999	10	10	0.0	155	183	-15.3
200,000 - 299,999	34	29	17.2	512	497	3.0
300,000 - 399,999	55	46	19.6	667	722	-7.6
400,000 - 499,999	35	12	191.7	431	459	-6.1
500,000 - 599,999	22	23	-4.3	290	272	6.6
600,000 - 699,999	9	14	-35.7	138	144	-4.2
700,000 - 799,999	7	5	40.0	85	78	9.0
800,000 - 899,999	6	2	200.0	44	42	4.8
900,000 - 999,999	3	2	50.0	30	24	25.0
1,000,000 - 1,249,999	2	4	-50.0	30	37	-18.9
1,250,000 - 1,499,999	4	2	100.0	22	27	-18.5
1,500,000 +	2	3	-33.3	28	34	-17.6
<b>TOTALS</b>	<b>215</b>	<b>162</b>	<b>32.7</b>	<b>2682</b>	<b>2694</b>	<b>-0.4</b>

### AVERAGE & MEDIAN PRICE



DATA SOURCE: Metropolitan Regional Information Systems, Inc. (MRIS)

NOTES: Properties not listed through this Multiple Listing Service are not reflected. The term "sales" represents ratified purchase contracts. Current year information is preliminary and subject to revision. Current year-to-date contract information may not equal the sum of the monthly contract totals reported in