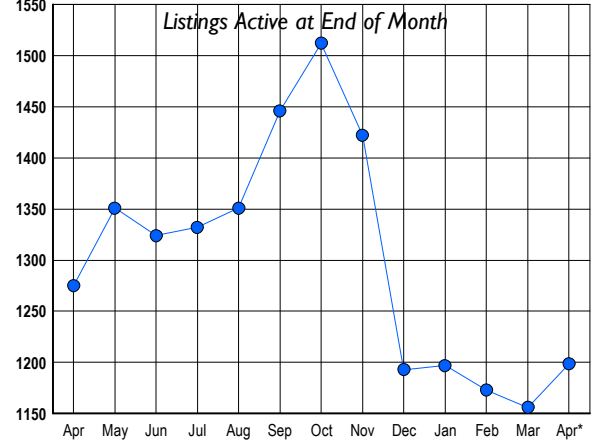




LISTINGS

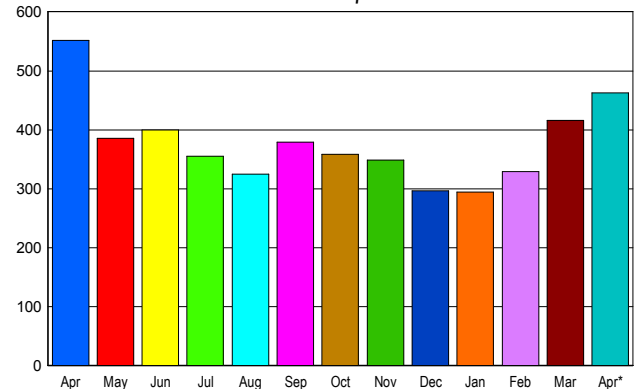
Prices Range	New This Month			Total Actives		
	2011	2010	% Change	2011	2010	% Change
0 - 149,999	36	51	-29.4	122	123	-0.8
150,000 - 199,999	49	51	-3.9	143	111	28.8
200,000 - 299,999	72	96	-25.0	168	212	-20.8
300,000 - 399,999	67	93	-28.0	161	162	-0.6
400,000 - 499,999	54	84	-35.7	114	114	0.0
500,000 - 599,999	49	70	-30.0	61	65	-6.2
600,000 - 699,999	51	44	15.9	57	51	11.8
700,000 - 799,999	58	65	-10.8	54	72	-25.0
800,000 - 899,999	35	44	-20.5	45	47	-4.3
900,000 - 999,999	23	21	9.5	38	41	-7.3
1,000,000 - 1,249,999	35	33	6.1	42	44	-4.5
1,250,000 - 1,499,999	16	34	-52.9	40	60	-33.3
1,500,000 +	60	65	-7.7	154	173	-11.0
TOTALS	605	751	-19.4	1199	1275	-6.0

INVENTORY TREND



SALES TREND

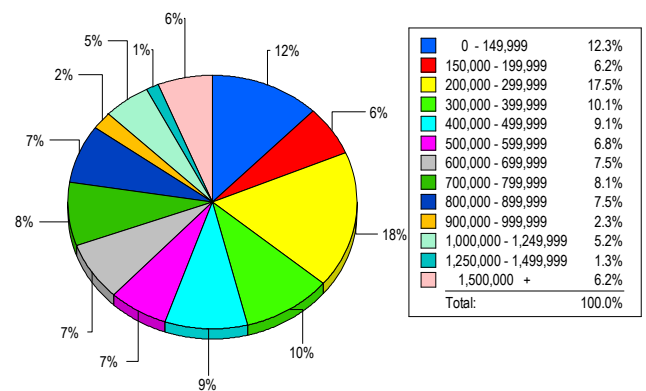
Contracts Ratified Per Month



CONTRACTS

Price Range	New This Month			Year-To-Date		
	2011	2010	% Change	2011	2010	% Change
0 - 149,999	41	64	-35.9	172	204	-15.7
150,000 - 199,999	39	47	-17.0	138	132	4.5
200,000 - 299,999	65	103	-36.9	209	324	-35.5
300,000 - 399,999	62	73	-15.1	196	197	-0.5
400,000 - 499,999	42	59	-28.8	141	146	-3.4
500,000 - 599,999	33	43	-23.3	93	102	-8.8
600,000 - 699,999	32	30	6.7	96	105	-8.6
700,000 - 799,999	52	37	40.5	128	102	25.5
800,000 - 899,999	22	21	4.8	67	61	9.8
900,000 - 999,999	11	18	-38.9	31	38	-18.4
1,000,000 - 1,249,999	26	17	52.9	54	45	20.0
1,250,000 - 1,499,999	12	13	-7.7	42	42	0.0
1,500,000 +	25	27	-7.4	76	62	22.6
TOTALS	462	552	-16.3	1443	1560	-7.5

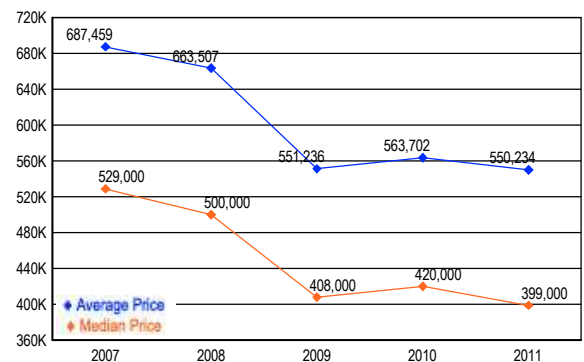
MARKET BY PRICE RANGE



SETTLEMENTS

Price Range	New This Month			Year-to-Date		
	2011	2010	% Change	2011	2010	% Change
0 - 149,999	38	37	2.7	152	160	-5.0
150,000 - 199,999	19	25	-24.0	92	87	5.7
200,000 - 299,999	54	59	-8.5	181	230	-21.3
300,000 - 399,999	31	46	-32.6	151	146	3.4
400,000 - 499,999	28	40	-30.0	102	105	-2.9
500,000 - 599,999	21	26	-19.2	79	77	2.6
600,000 - 699,999	23	26	-11.5	80	70	14.3
700,000 - 799,999	25	19	31.6	83	70	18.6
800,000 - 899,999	23	16	43.8	58	44	31.8
900,000 - 999,999	7	10	-30.0	24	24	0.0
1,000,000 - 1,249,999	16	14	14.3	44	40	10.0
1,250,000 - 1,499,999	4	7	-42.9	22	25	-12.0
1,500,000 +	19	13	46.2	58	42	38.1
TOTALS	308	338	-8.9	1126	1120	0.5

AVERAGE & MEDIAN PRICE



DATA SOURCE: Metropolitan Regional Information Systems, Inc. (MRIS)

NOTES: Properties not listed through this Multiple Listing Service are not reflected. The term "sales" represents ratified purchase contracts. Current year information is preliminary and subject to revision. Current year-to-date contract information may not equal the sum of the monthly contract totals reported in