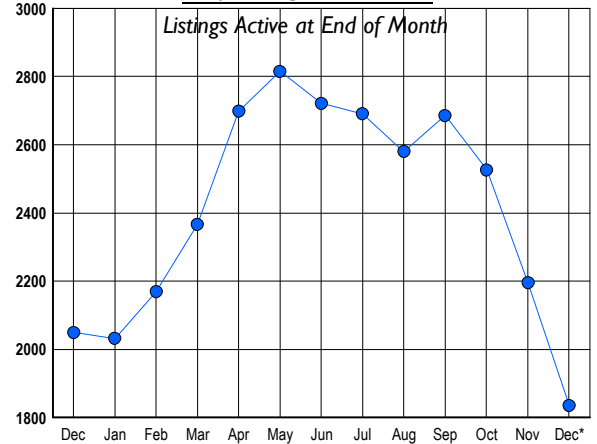


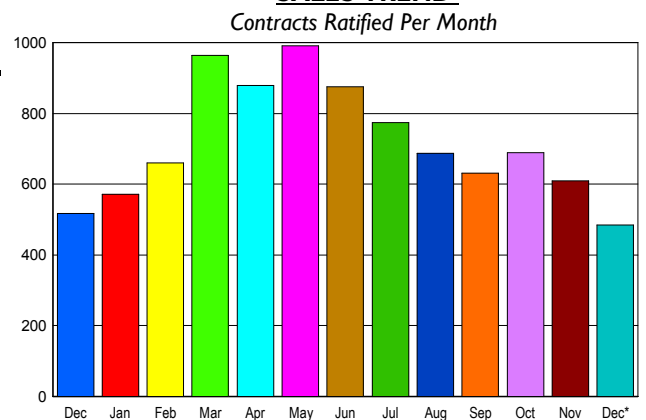
LISTINGS

Prices Range	New This Month			Total Actives		
	2011	2010	% Change	2011	2010	% Change
0 - 149,999	12	27	-55.6	24	58	-58.6
150,000 - 199,999	24	38	-36.8	54	120	-55.0
200,000 - 299,999	98	126	-22.2	262	396	-33.8
300,000 - 399,999	98	87	12.6	390	418	-6.7
400,000 - 499,999	56	67	-16.4	239	260	-8.1
500,000 - 599,999	45	40	12.5	210	170	23.5
600,000 - 699,999	33	31	6.5	171	140	22.1
700,000 - 799,999	17	15	13.3	93	84	10.7
800,000 - 899,999	12	13	-7.7	71	69	2.9
900,000 - 999,999	8	8	0.0	37	47	-21.3
1,000,000 - 1,249,999	10	7	42.9	71	75	-5.3
1,250,000 - 1,499,999	4	7	-42.9	51	53	-3.8
1,500,000 +	16	12	33.3	162	160	1.3
TOTALS	433	478	-9.4	1835	2050	-10.5

INVENTORY TREND



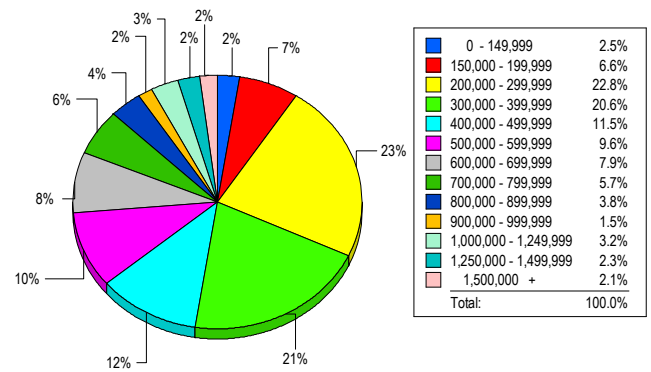
SALES TREND



CONTRACTS

Price Range	New This Month			Year-To-Date		
	2011	2010	% Change	2011	2010	% Change
0 - 149,999	22	34	-35.3	250	317	-21.1
150,000 - 199,999	41	57	-28.1	573	644	-11.0
200,000 - 299,999	135	133	1.5	1,608	1,729	-7.0
300,000 - 399,999	78	87	-10.3	1,437	1,555	-7.6
400,000 - 499,999	58	64	-9.4	947	1,108	-14.5
500,000 - 599,999	48	42	14.3	748	815	-8.2
600,000 - 699,999	37	33	12.1	598	704	-15.1
700,000 - 799,999	24	16	50.0	438	437	0.2
800,000 - 899,999	10	13	-23.1	269	319	-15.7
900,000 - 999,999	10	10	0.0	180	189	-4.8
1,000,000 - 1,249,999	7	13	-46.2	246	233	5.6
1,250,000 - 1,499,999	7	6	16.7	171	188	-9.0
1,500,000 +	8	10	-20.0	202	193	4.7
TOTALS	485	518	-6.4	7667	8431	-9.1

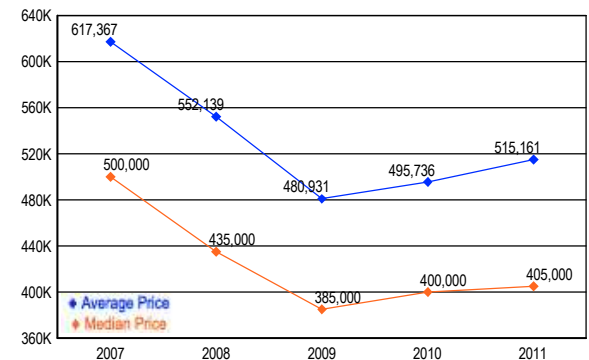
MARKET BY PRICE RANGE



SETTLEMENTS

Price Range	New This Month			Year-to-Date		
	2011	2010	% Change	2011	2010	% Change
0 - 149,999	13	18	-27.8	222	278	-20.1
150,000 - 199,999	35	35	0.0	497	551	-9.8
200,000 - 299,999	121	119	1.7	1,458	1,652	-11.7
300,000 - 399,999	109	93	17.2	1,377	1,549	-11.1
400,000 - 499,999	61	81	-24.7	941	1,080	-12.9
500,000 - 599,999	51	64	-20.3	716	783	-8.6
600,000 - 699,999	42	49	-14.3	583	677	-13.9
700,000 - 799,999	30	26	15.4	423	456	-7.2
800,000 - 899,999	20	28	-28.6	270	301	-10.3
900,000 - 999,999	8	19	-57.9	170	184	-7.6
1,000,000 - 1,249,999	17	28	-39.3	275	259	6.2
1,250,000 - 1,499,999	12	13	-7.7	146	154	-5.2
1,500,000 +	11	16	-31.3	185	164	12.8
TOTALS	530	589	-10.0	7263	8088	-10.2

AVERAGE & MEDIAN PRICE



DATA SOURCE: Metropolitan Regional Information Systems, Inc. (MRIS)

NOTES: Properties not listed through this Multiple Listing Service are not reflected. The term "sales" represents ratified purchase contracts. Current year information is preliminary and subject to revision. Current year- to- date contract information may not equal the sum of the monthly contract totals reported in