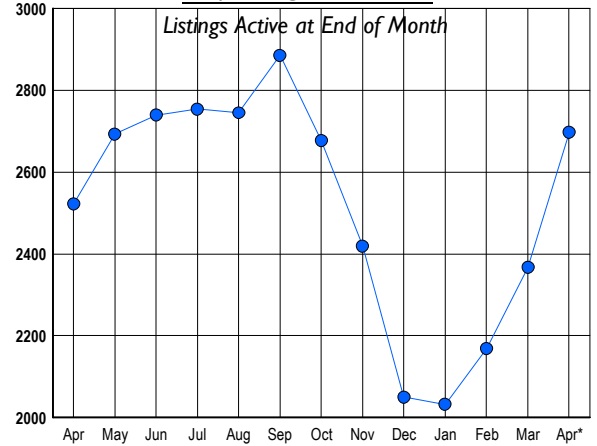




## LISTINGS

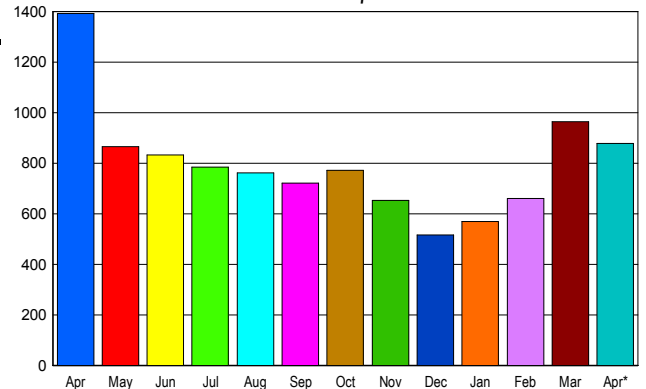
Prices Range	New This Month			Total Actives		
	2011	2010	% Change	2011	2010	% Change
0 - 149,999	24	42	-42.9	30	29	3.4
150,000 - 199,999	66	90	-26.7	88	77	14.3
200,000 - 299,999	192	284	-32.4	358	332	7.8
300,000 - 399,999	245	378	-35.2	522	471	10.8
400,000 - 499,999	196	246	-20.3	364	337	8.0
500,000 - 599,999	162	207	-21.7	263	259	1.5
600,000 - 699,999	132	177	-25.4	235	233	0.9
700,000 - 799,999	101	111	-9.0	176	149	18.1
800,000 - 899,999	85	86	-1.2	121	104	16.3
900,000 - 999,999	38	60	-36.7	80	75	6.7
1,000,000 - 1,249,999	62	62	0.0	128	100	28.0
1,250,000 - 1,499,999	36	55	-34.5	95	104	-8.7
1,500,000 +	83	91	-8.8	238	252	-5.6
<b>TOTALS</b>	<b>1422</b>	<b>1889</b>	<b>-24.7</b>	<b>2698</b>	<b>2522</b>	<b>7.0</b>

## INVENTORY TREND



## SALES TREND

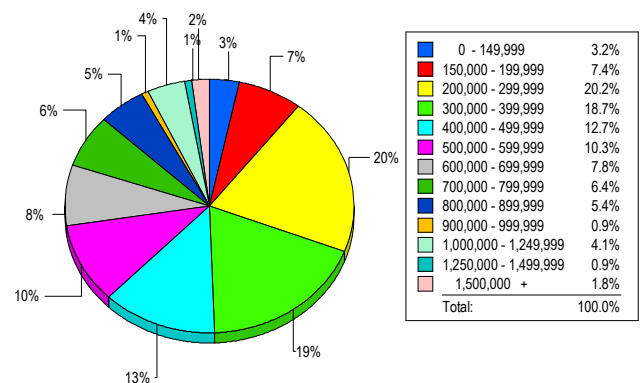
Contracts Ratified Per Month



## CONTRACTS

Price Range	New This Month			Year-To-Date		
	2011	2010	% Change	2011	2010	% Change
0 - 149,999	38	48	-20.8	127	149	-14.8
150,000 - 199,999	80	99	-19.2	258	307	-16.0
200,000 - 299,999	170	312	-45.5	607	817	-25.7
300,000 - 399,999	144	279	-48.4	509	746	-31.8
400,000 - 499,999	119	168	-29.2	359	481	-25.4
500,000 - 599,999	92	141	-34.8	268	330	-18.8
600,000 - 699,999	71	102	-30.4	218	266	-18.0
700,000 - 799,999	53	74	-28.4	159	184	-13.6
800,000 - 899,999	30	55	-45.5	101	123	-17.9
900,000 - 999,999	17	37	-54.1	45	72	-37.5
1,000,000 - 1,249,999	17	36	-52.8	78	73	6.8
1,250,000 - 1,499,999	21	23	-8.7	61	69	-11.6
1,500,000 +	28	19	47.4	75	57	31.6
<b>TOTALS</b>	<b>880</b>	<b>1393</b>	<b>-36.8</b>	<b>2865</b>	<b>3674</b>	<b>-22.0</b>

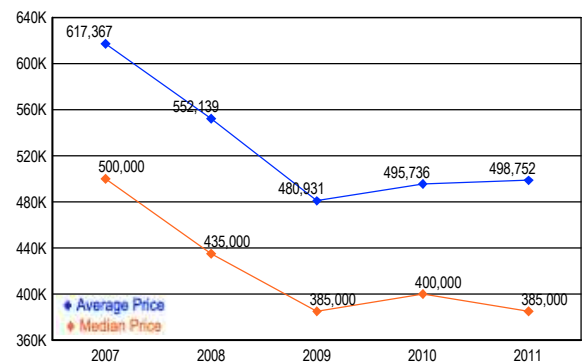
## MARKET BY PRICE RANGE



## SETTLEMENTS

Price Range	New This Month			Year-to-Date		
	2011	2010	% Change	2011	2010	% Change
0 - 149,999	21	19	10.5	82	91	-9.9
150,000 - 199,999	48	57	-15.8	157	209	-24.9
200,000 - 299,999	132	135	-2.2	437	475	-8.0
300,000 - 399,999	122	176	-30.7	393	502	-21.7
400,000 - 499,999	83	107	-22.4	254	284	-10.6
500,000 - 599,999	67	61	9.8	197	190	3.7
600,000 - 699,999	51	65	-21.5	172	163	5.5
700,000 - 799,999	42	44	-4.5	106	126	-15.9
800,000 - 899,999	35	27	29.6	79	61	29.5
900,000 - 999,999	6	12	-50.0	29	40	-27.5
1,000,000 - 1,249,999	27	15	80.0	77	56	37.5
1,250,000 - 1,499,999	6	16	-62.5	30	35	-14.3
1,500,000 +	12	12	0.0	49	37	32.4
<b>TOTALS</b>	<b>652</b>	<b>746</b>	<b>-12.6</b>	<b>2062</b>	<b>2269</b>	<b>-9.1</b>

## AVERAGE & MEDIAN PRICE



DATA SOURCE: Metropolitan Regional Information Systems, Inc. (MRIS)

NOTES: Properties not listed through this Multiple Listing Service are not reflected. The term "sales" represents ratified purchase contracts. Current year information is preliminary and subject to revision. Current year-to-date contract information may not equal the sum of the monthly contract totals reported in