

HOWARD COUNTY

Residential Market Report

HOUSING REPORT

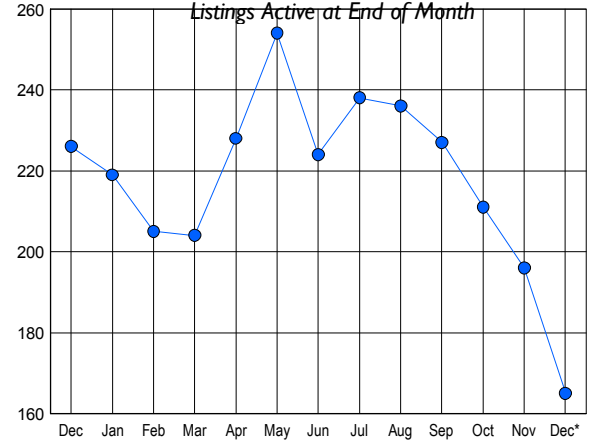
CONDO & COOPS

December 2011

LISTINGS

Price Range	New This Month			Total Actives		
	2011	2010	% Change	2011	2010	% Change
0 - 149,999	9	6	50.0	42	43	-2.3
150,000 - 199,999	3	5	-40.0	36	55	-34.5
200,000 - 299,999	10	13	-23.1	41	68	-39.7
300,000 - 399,999	7	7	0.0	24	32	-25.0
400,000 - 499,999	1	4	-75.0	14	20	-30.0
500,000 - 599,999	2	1	100.0	7	6	16.7
600,000 - 699,999	0	1	-100.0	1	2	-50.0
700,000 - 799,999	0	0	0.0	0	0	0.0
800,000 - 899,999	0	0	0.0	0	0	0.0
900,000 - 999,999	0	0	0.0	0	0	0.0
1,000,000 - 1,249,999	0	0	0.0	0	0	0.0
1,250,000 - 1,499,999	0	0	0.0	0	0	0.0
1,500,000 +	0	0	0.0	0	0	0.0
TOTALS	32	37	-13.5	165	226	-27.0

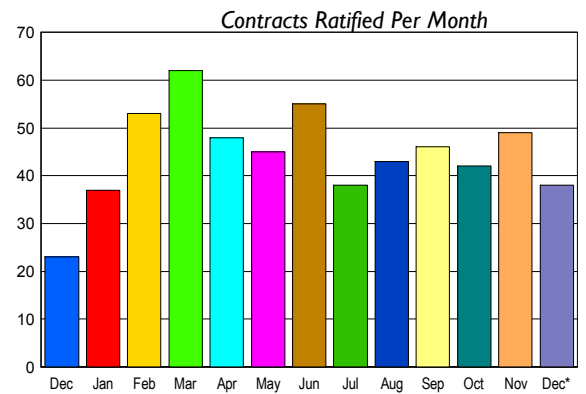
INVENTORY TREND



CONTRACTS

Price Range	New This Month			Year-To-Date		
	2011	2010	% Change	2011	2010	% Change
0 - 149,999	10	4	150.0	101	57	77.2
150,000 - 199,999	5	3	66.7	89	98	-9.2
200,000 - 299,999	12	11	9.1	168	204	-17.6
300,000 - 399,999	7	3	133.3	64	71	-9.9
400,000 - 499,999	3	1	200.0	42	34	23.5
500,000 - 599,999	1	0	100.0	18	6	200.0
600,000 - 699,999	0	1	-100.0	1	1	0.0
700,000 - 799,999	0	0	0.0	0	0	0.0
800,000 - 899,999	0	0	0.0	0	0	0.0
900,000 - 999,999	0	0	0.0	0	0	0.0
1,000,000 - 1,249,999	0	0	0.0	0	0	0.0
1,250,000 - 1,499,999	0	0	0.0	0	0	0.0
1,500,000 +	0	0	0.0	0	0	0.0
TOTALS	38	23	65.2	483	471	2.5

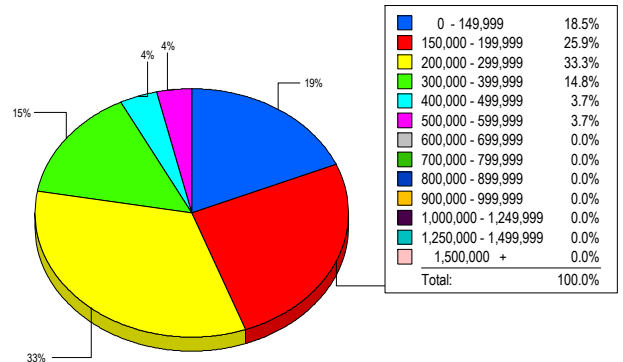
SALES TREND



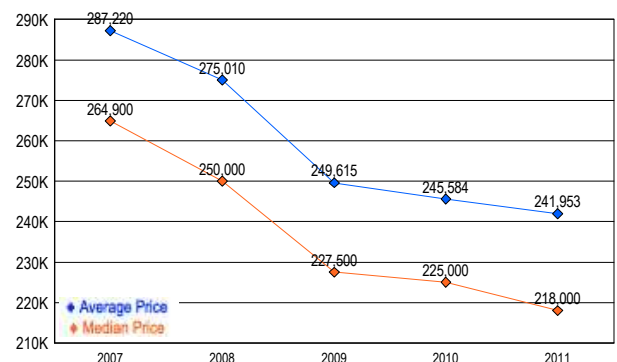
SETTLEMENTS

Price Range	New This Month			Year-To-Date		
	2011	2010	% Change	2011	2010	% Change
0 - 149,999	5	3	66.7	84	58	44.8
150,000 - 199,999	7	10	-30.0	92	97	-5.2
200,000 - 299,999	9	16	-43.8	158	195	-19.0
300,000 - 399,999	4	3	33.3	52	71	-26.8
400,000 - 499,999	1	3	-66.7	37	39	-5.1
500,000 - 599,999	1	1	0.0	17	5	240.0
600,000 - 699,999	0	0	0.0	0	0	0.0
700,000 - 799,999	0	0	0.0	0	0	0.0
800,000 - 899,999	0	0	0.0	0	0	0.0
900,000 - 999,999	0	0	0.0	0	0	0.0
1,000,000 - 1,249,999	0	0	0.0	0	0	0.0
1,250,000 - 1,499,999	0	0	0.0	0	0	0.0
1,500,000 +	0	0	0.0	0	0	0.0
TOTALS	27	36	-25.0	440	465	-5.4

MARKET BY PRICE RANGE



AVERAGE & MEDIAN PRICE



DATA SOURCE: Metropolitan Regional Information Systems, Inc. (MRIS)

NOTES: Properties not listed through this Multiple Listing Service are not reflected. The term "sales" represents ratified purchase contracts. Current year information is preliminary and subject to revision. Current year- to- date contract information may not equal the sum of the monthly contract totals reported in