

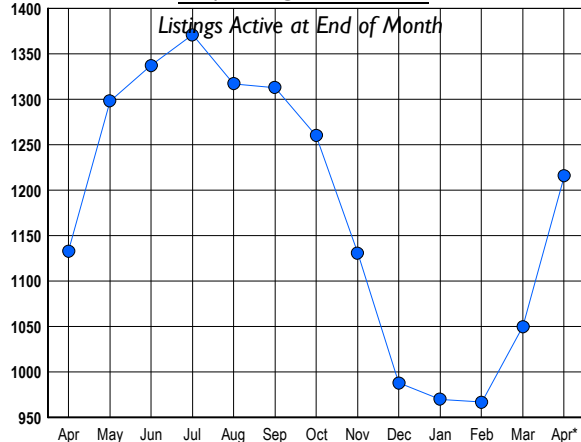
HOWARD COUNTY Residential Market Report

HOUSING REPORT Single Family Homes April 2011

LISTINGS

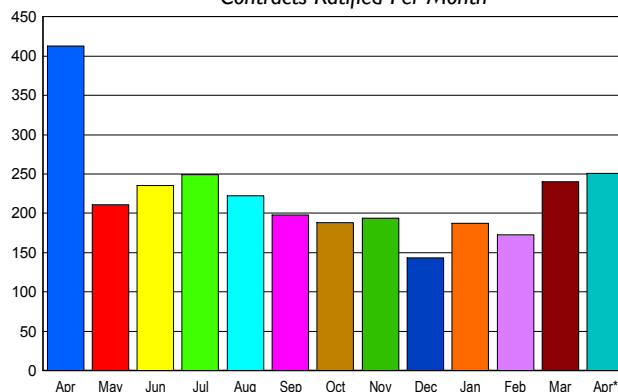
Prices Range	New This Month			Total Actives		
	2011	2010	% Change	2011	2010	% Change
0 - 149,999	2	4	-50.0	6	7	-14.3
150,000 - 199,999	6	13	-53.8	20	15	33.3
200,000 - 299,999	78	93	-16.1	195	137	42.3
300,000 - 399,999	108	160	-32.5	235	217	8.3
400,000 - 499,999	98	101	-3.0	193	158	22.2
500,000 - 599,999	77	68	13.2	147	153	-3.9
600,000 - 699,999	56	51	9.8	115	134	-14.2
700,000 - 799,999	42	44	-4.5	91	94	-3.2
800,000 - 899,999	21	21	0.0	77	47	63.8
900,000 - 999,999	7	24	-70.8	33	55	-40.0
1,000,000 - 1,249,999	4	22	-81.8	48	49	-2.0
1,250,000 - 1,499,999	2	15	-86.7	32	33	-3.0
1,500,000 +	7	7	0.0	24	34	-29.4
TOTALS	508	623	-18.5	1216	1133	7.3

INVENTORY TREND



SALES TREND

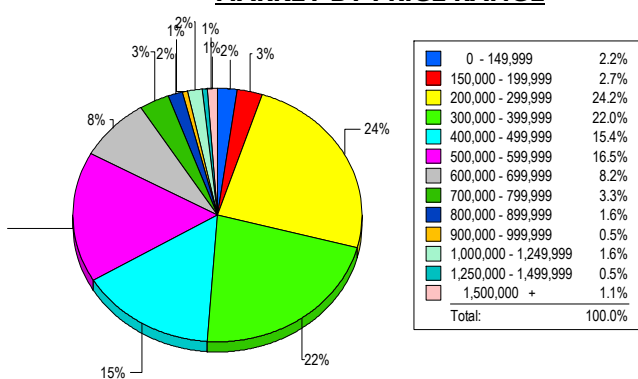
Contracts Ratified Per Month



CONTRACTS

Price Range	New This Month			Year-To-Date		
	2011	2010	% Change	2011	2010	% Change
0 - 149,999	2	7	-71.4	6	10	-40.0
150,000 - 199,999	10	14	-28.6	39	42	-7.1
200,000 - 299,999	68	81	-16.0	210	211	-0.5
300,000 - 399,999	55	113	-51.3	174	285	-38.9
400,000 - 499,999	44	89	-50.6	132	202	-34.7
500,000 - 599,999	37	45	-17.8	109	106	2.8
600,000 - 699,999	19	33	-42.4	61	80	-23.8
700,000 - 799,999	8	15	-46.7	29	38	-23.7
800,000 - 899,999	4	7	-42.9	18	16	12.5
900,000 - 999,999	2	2	0.0	6	14	-57.1
1,000,000 - 1,249,999	0	3	-100.0	6	9	-33.3
1,250,000 - 1,499,999	0	2	-100.0	2	3	-33.3
1,500,000 +	2	2	0.0	6	6	0.0
TOTALS	251	413	-39.2	798	1022	-21.9

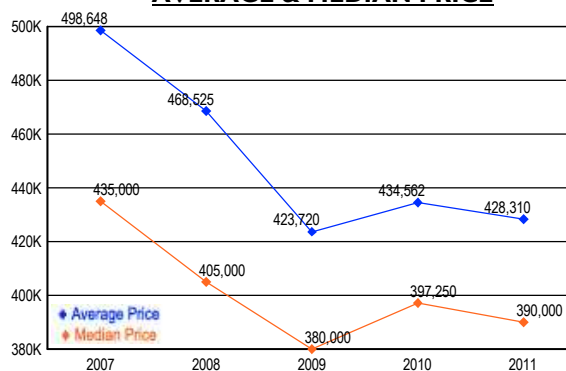
MARKET BY PRICE RANGE



SETTLEMENTS

Price Range	New This Month			Year-to-Date		
	2011	2010	% Change	2011	2010	% Change
0 - 149,999	4	1	300.0	6	2	200.0
150,000 - 199,999	5	4	25.0	21	23	-8.7
200,000 - 299,999	44	51	-13.7	148	154	-3.9
300,000 - 399,999	40	57	-29.8	131	183	-28.4
400,000 - 499,999	28	38	-26.3	106	117	-9.4
500,000 - 599,999	30	20	50.0	83	72	15.3
600,000 - 699,999	15	19	-21.1	41	56	-26.8
700,000 - 799,999	6	6	0.0	15	23	-34.8
800,000 - 899,999	3	5	-40.0	6	9	-33.3
900,000 - 999,999	1	2	-50.0	6	11	-45.5
1,000,000 - 1,249,999	3	1	200.0	7	4	75.0
1,250,000 - 1,499,999	1	0	100.0	3	0	300.0
1,500,000 +	2	1	100.0	4	1	300.0
TOTALS	182	205	-11.2	577	655	-11.9

AVERAGE & MEDIAN PRICE



DATA SOURCE: Metropolitan Regional Information Systems, Inc. (MRIS)

NOTES: Properties not listed through this Multiple Listing Service are not reflected. The term "sales" represents ratified purchase contracts. Current year information is preliminary and subject to revision. Current year- to- date contract information may not equal the sum of the monthly contract totals reported in